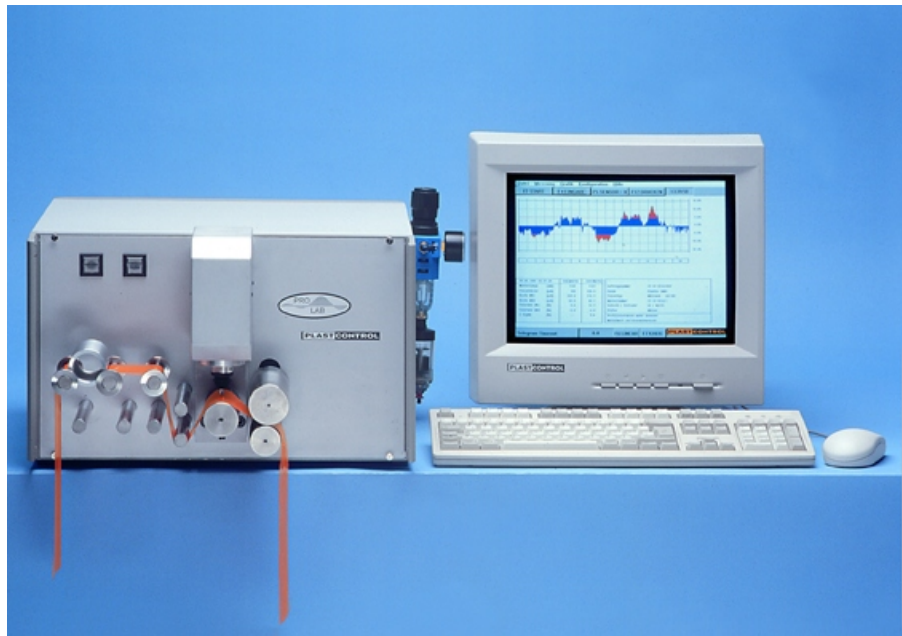
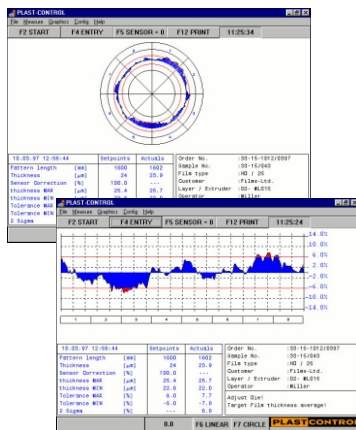


CONTACT FREE PROFILE - MEASUREMENT

PRO-LAB

**PROFILE - ANALYSING SYSTEM
INDICATION OF ABSOLUTE THICKNESS**



PRO-LAB OFFERS: QUALITY - IMPROVEMENT AND COST REDUCTION THROUGH AN OPTIMIZED & CONSTANT PRODUCT THICKNESS

The **PLAST-CONTROL** laboratory gauge measurement system, PRO-LAB, is designed to provide absolute gauge profile measurement of film samples using a non contact and non nuclear method.

A sample strip of film approximately 4" wide is threaded through the stepper motor driven transport system. The sample film strip is drawn past an air cushion measurement sensor, as the gauge varies the sensor moves to maintain its equilibrium

distance from the film. An optical measuring device records the movement of the sensor and translates it into an absolute measurement of gauge.

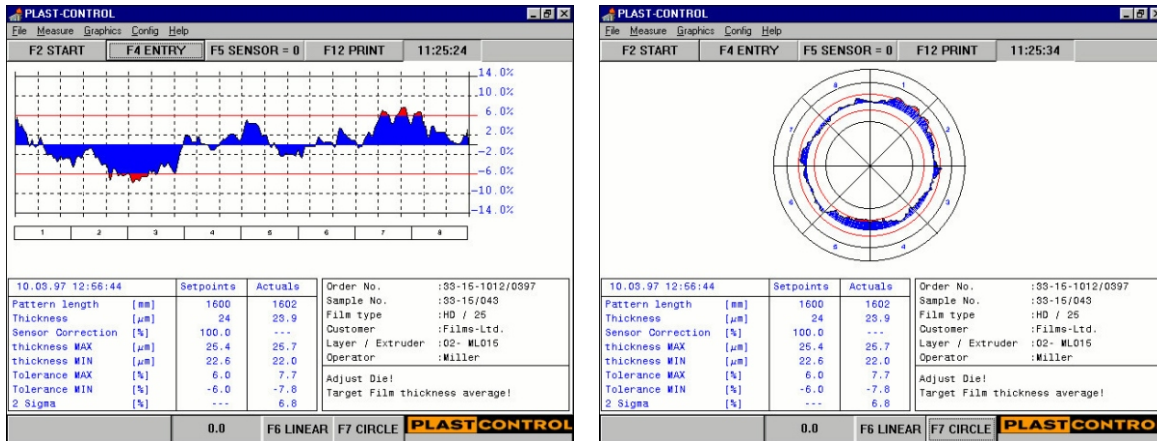
A customer supplied computer runs the Windows based PRO-LAB software and displays the profile results in a linear or polar plot with tabular results of maximum, minimum, average and 2- sigma gauge .

The PRO-LAB Software organizes data in an xls format for export. Additional text fields are available to enter product codes or film specific data.

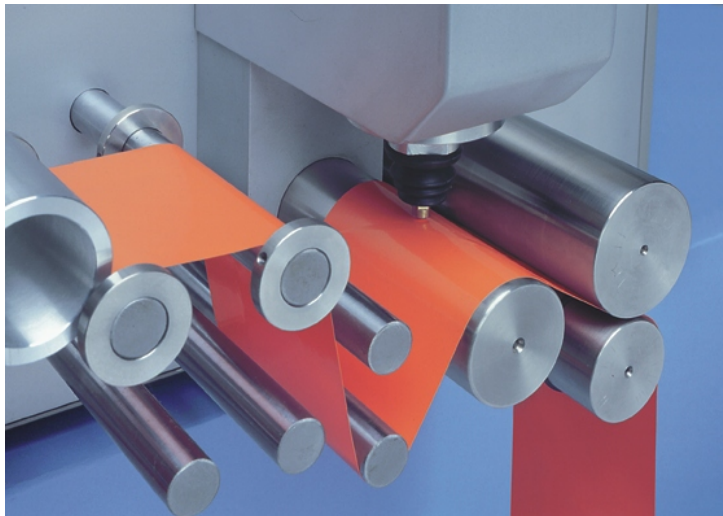
MEASUREMENT PRINCIPLE

The **PRO-LAB** air sensor is suspended over the measurement sample at a constant distance by a cushion of air. As the sample is drawn past the sensor it moves with the profile of the sample maintaining a constant or equilibrium distance from the sample. An optical system records the movement of the sensor and translates the movement into an absolute measurement of gauge. The sample transport is stepper motor driven which provides for the accurate correlation of sample position to the measurement in the display.

SCREEN DISPLAYS



TECHNICAL DATA



- Measuring range
20μm - 600μm (0.8 - 24mil)
- Sensor resolution
± 0.1μm (0.004mil)
- Measuring diameter
1,5 mm Ø (60 mil)
- Measuring speed
180 - 7200mm/min
- Air supply
4 - 8 bar (60 - 120 PSI)
- Power supply
110 / 230 V AC
- System dimensions
600 x 450 x 350 (24" x 18" x 14")
D W H

SYSTEM SPECIFICATION

SYSTEM REQUIREMENTS

- IBM PC Pentium III
- 32 Mbytes RAM
- Serial link RS 232 (FIFO)
- Floppy Disk 1.44 MB
- Standard VGA adapter
- MS Windows © 98 or higher

DELIVERY

- PRO-LAB Desktop
- Serial link cable approx. 1,8m
- RS 232 adaptor 9/25pin Sub-D
- 3,5" Disk with PRO-LAB Software