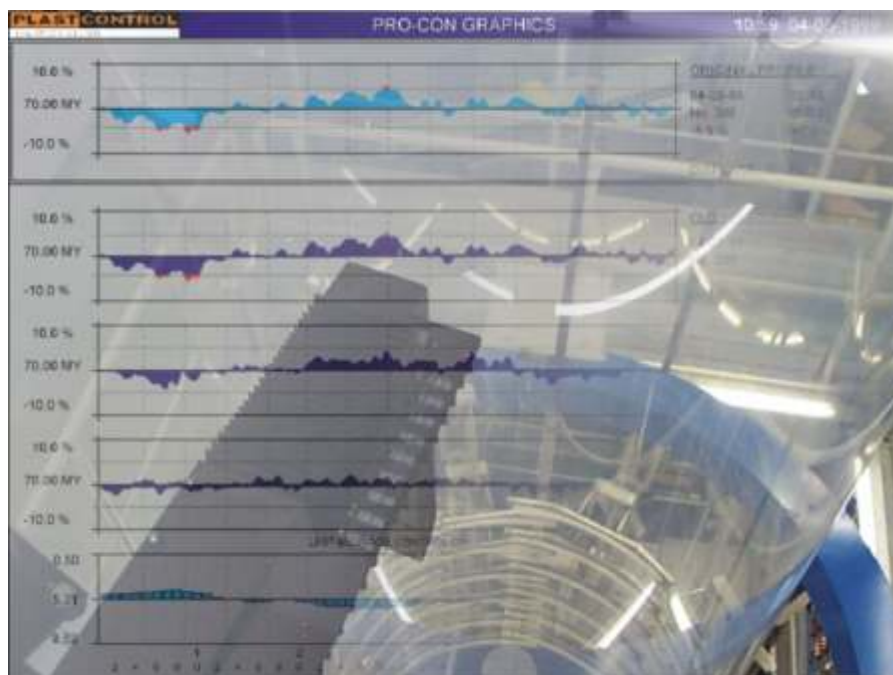
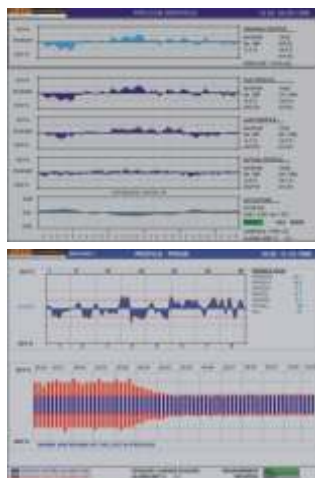


**AUTOMATIC PROFILE CONTROL SYSTEMS**

# ACS PRO-CON

**For Mono- and Coextrusion Blown film lines**



## QUALITY ASSURANCE WITH PLAST-CONTROL PROFILE CONTROL

The PRO-CON automatic profile control air ring integrates segmented air ring technology together with advanced, user friendly software to deliver profit building improvements to blown film gauge profile. Utilising our PRO-FIL gauge measurement technology the film gauge profile is accurately measured and then mapped back to its point of origin at the die. Once measured and located the PRO-CON system makes highly effective corrective actions to eliminate the profile variations. These corrective actions are continuously and automatically made via adjustments to the airflow volume through the individual air ring elements.

For example, where the film is found to be thin, airflow through the corresponding segment is increased, reducing draw down and thus increasing thickness.

Conversely, where the film is thick, airflow is reduced and draw down rate is increased to reduce film thickness. Through our patented and unique technology each control segment of the air ring is independent, completely eliminating the influence of one segment to another.

PRO-CON is available with high performance dual and high flow air lip designs for both pocket and high neck blown film extrusion processes. When compared to other systems, PRO-CON has proved to offer superior output and process stability and exceptionally low profile tolerance. The system is designed to be readily retro fitted to upgrade most blown film lines and may be ordered with new lines. All machine rotation/oscillation is possible including dies and haul-off or completely stationary.

- Quality improvement and repeatability of products
- Reduction of production costs - increased yield
- Fast stabilization of the process
- Short job changes
- Simple operation
- Clearly arranged display
- Information displayed as text and graphics
- Instant alarm reports with text editor for in-house explanations
- Documentation of product- and process data (ISO 9000)
- Retrofits on existing lines or new installations
- Fast return on investment
- Moving die solutions with Infrared or Bluetooth communication and built in air plenum

**AIR RING SIZE OPTIONS**



<b>type:</b>	<b>K400</b>	<b>K750</b>	<b>K1100</b>	<b>K1400</b>
min./ max. Die diameter	7.9" - 17.7"	15.7" - 29.5"	27" - 43"	41" - 55"
max. die + heater bands	32.3"	51"		
outer diameter	58.4"	78.3"	86"	102"
height	11.3"	11.3"	11.3"	11.3"
no. of air inlets	6 x 3.94"	8 x 3.94"	10 x 3.94"	16 x 3.94"
weight approx.	946 lb	1144 lb	1500 lb	1800 lb

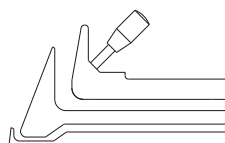
subject to change without notice, contact your nearest PLAST-CONTROL office for current information

**AIR LIP DESIGNS**

**LD - Mono lip**



**LD - Dual lip**



**HD - Mono lip**



**HIFLOW**

