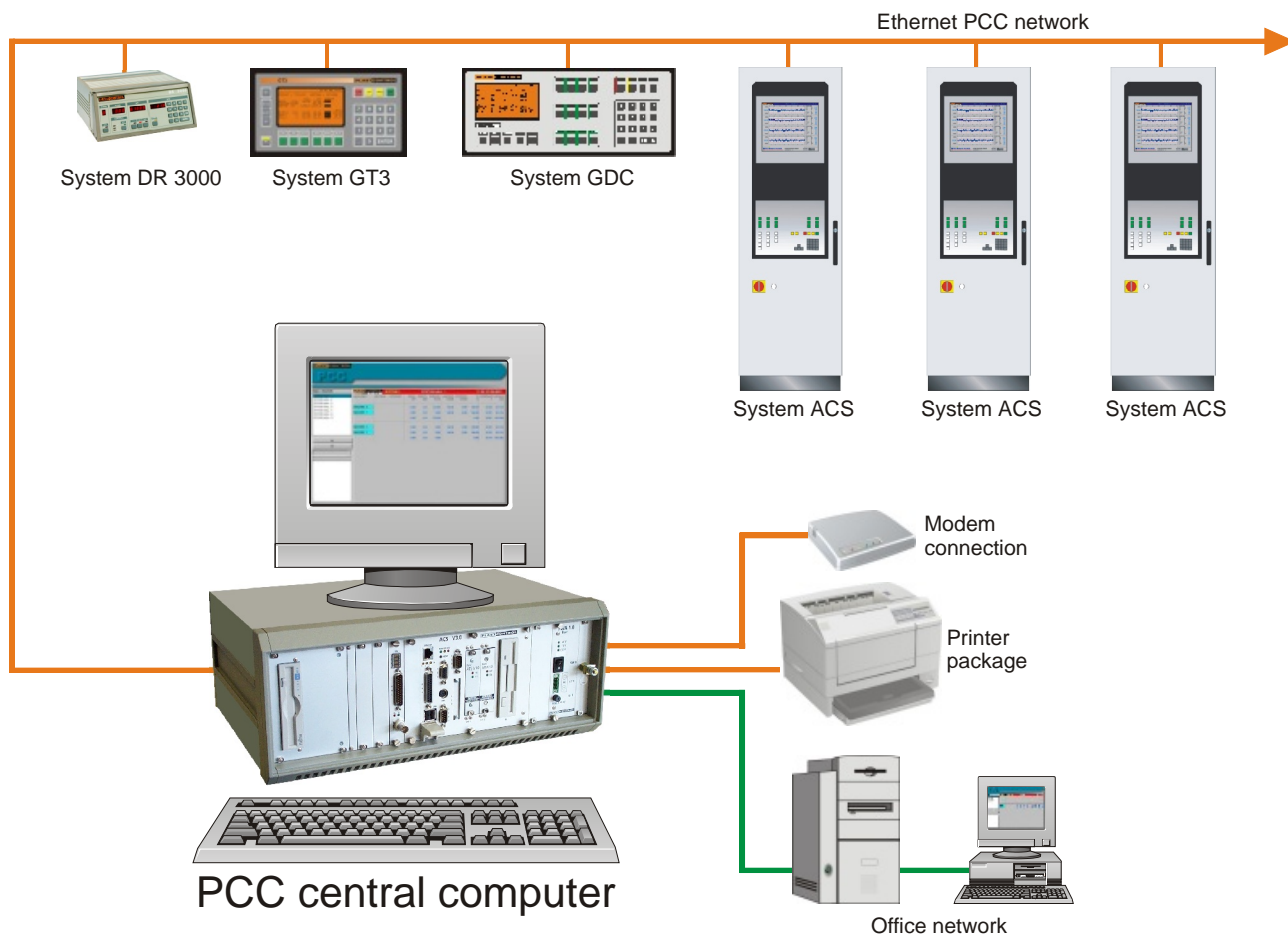


## COMPLETE INTEGRATION OF THE PLAST-CONTROL RANGE OF EXTRUSION CONTROL SYSTEMS TO ONE CENTRAL REPORTING SERVER



### Factory wide networking of all PLAST-CONTROL systems to PCC server

The PCC system utilizes the QNX operating system. Highly respected in the industry for real time critical application.

Offering extreme durability against operator and external influences. It delivers a stable base to run the PCC software.

PCC is a modular concept and can be expanded to suit the customers application. It is extremely easy to use.

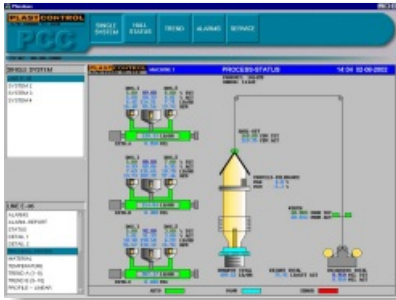
Using the same logical screen displays familiar to those of the control systems, the system user does not need any specific training in the use of computer, windows based applications or DOS based coding.

All the PCC functions are operated by clicking on individual "buttons" displayed on the screen.

The PCC server can also be connected to an office based network. Installing PCC virtual terminal program on the network PC provides full access to the machine hall control systems.

The PCC can also be connected by telephone from a remote computer for service and remote accessing of reports.

**STANDARD SYSTEM**



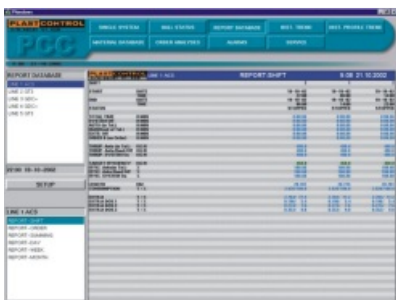
Complete access to all control systems, with actual real time display of system screens, central alarm reports, central modem connection and printer package.

**PCC EXPANSION MODULES**



**Expansion Module "Historical Trend"**

This expansion module enables a historical trace of process data. The values can be selected in the hall-wide status report. PCC generates Plant Overviews incorporating plant efficiency reports and plant status as well as production figures over daily, weekly and monthly time.



**Expansion Module "Report data base"**

Material database system, incorporating a central database editing system, for uploading the database material codes to each individual control system. The database is also linked to material and order specific consumption reports.



**Expansion Module "Report data base Professional"**

Production reporting option covering all statistically data based on an order including profile tolerances\* Profile control information\* Material consumption per order (optionally linked to data base). The reporting module also includes a trend analysis function selectable for individual production machines and centralised PCC reporting.



**Expansion Module "Material data base"**

This module includes the complete material data base management. Additional reports can be generated. Selectable are either individual or fixed (e.g.: Shift) time periods.

\*Profile measuring options needs to be installed on the line control system.